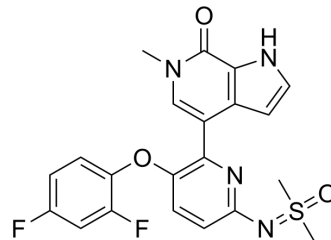


BET-IN-15

Cat. No.:	HY-153945
CAS No.:	2408994-22-7
Molecular Formula:	C ₂₁ H ₁₈ F ₂ N ₄ O ₃ S
Molecular Weight:	444.45
Target:	Epigenetic Reader Domain
Pathway:	Epigenetics
Storage:	Please store the product under the recommended conditions in the Certificate of Analysis.



BIOLOGICAL ACTIVITY

Description	BET-IN-15 (compound 1) is a potent and orally active BET inhibitor with IC ₅₀ values of 0.64, 0.25 nM for BRD4-BD1, BRD4-BD2, respectively. BET-IN-15 shows antiproliferative activity ^[1] .	
IC₅₀ & Target	BRD4-BD1 0.64 nM (IC ₅₀)	BRD4-BD2 0.25 nM (IC ₅₀)
In Vitro	BET-IN-15 (compound 1) (72 h) shows antiproliferative activity with IC ₅₀ s of 3.14, 1.56 nM for MV4-11, Kasumi-1 cells, respectively ^[1] . MCE has not independently confirmed the accuracy of these methods. They are for reference only.	
In Vivo	BET-IN-15 (compound 1) (72 h) showed antiproliferative activity with IC ₅₀ s of 3.14, 1.56 nM ^[1] in MV4-11, Kasumi-1 cells . MCE has not independently confirmed the accuracy of these methods. They are for reference only.	

REFERENCES

[1]. WenWei Xu, et al. Crystal form and salt form of bromine domain protein inhibitor and preparation method therefor. WO2021143922A1.

Caution: Product has not been fully validated for medical applications. For research use only.

Tel: 609-228-6898

Fax: 609-228-5909

E-mail: tech@MedChemExpress.com

Address: 1 Deer Park Dr, Suite Q, Monmouth Junction, NJ 08852, USA