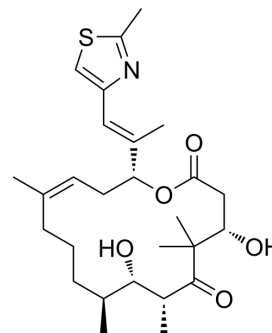


(16R)-Epothilone D

Cat. No.:	HY-15278A		
Molecular Formula:	C ₂₇ H ₄₁ NO ₅ S		
Molecular Weight:	491.68		
Target:	Others		
Pathway:	Others		
Storage:	Powder	-20°C	3 years
	In solvent	-80°C	6 months
		-20°C	1 month



BIOLOGICAL ACTIVITY

Description

(16R)-Epothilone D is the inactive isomer of Epothilone D (HY-15278), and can be used as an experimental control. Epothilone D (KOS 862) is a potent microtubule stabilizer.

REFERENCES

- [1]. Brunden KR, et al. Epothilone D improves microtubule density, axonal integrity, and cognition in a transgenic mouse model of tauopathy. *J Neurosci*. 2010 Oct 13;30(41):13861-6.
- [2]. Konner J, et al. Phase I clinical, pharmacokinetic, and pharmacodynamic study of KOS-862 (Epothilone D) in patients with advanced solid tumors and lymphoma. *Invest New Drugs*. 2012 Dec;30(6):2294-302.

Caution: Product has not been fully validated for medical applications. For research use only.

Tel: 609-228-6898

Fax: 609-228-5909

E-mail: tech@MedChemExpress.com

Address: 1 Deer Park Dr, Suite Q, Monmouth Junction, NJ 08852, USA