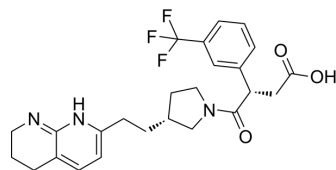


$\alpha\beta 5$ integrin-IN-1

Cat. No.:	HY-145363		
CAS No.:	2615912-33-7		
Molecular Formula:	C ₂₅ H ₂₈ F ₃ N ₃ O ₃		
Molecular Weight:	475.5		
Target:	Integrin		
Pathway:	Cytoskeleton		
Storage:	Powder	-20°C	3 years
		4°C	2 years
	In solvent	-80°C	6 months
		-20°C	1 month



SOLVENT & SOLUBILITY

In Vitro

DMSO : 100 mg/mL (210.30 mM; Need ultrasonic)

Concentration	Mass		
	1 mg	5 mg	10 mg
1 mM	2.1030 mL	10.5152 mL	21.0305 mL
5 mM	0.4206 mL	2.1030 mL	4.2061 mL
10 mM	0.2103 mL	1.0515 mL	2.1030 mL

Please refer to the solubility information to select the appropriate solvent.

BIOLOGICAL ACTIVITY

Description

$\alpha\beta 5$ integrin-IN-1 is a first potent and selective $\alpha\beta 5$ integrin inhibitor (pIC₅₀ = 8.2) .

IC₅₀ & Target

$\alpha\beta 5$
8.2 (pIC₅₀)

REFERENCES

[1]. Lippa RA, et al. Discovery of the first potent and selective $\alpha\beta 5$ integrin inhibitor based on an amide-containing core. Eur J Med Chem. 2020 Dec 15;208:112719.

Caution: Product has not been fully validated for medical applications. For research use only.

Tel: 609-228-6898

Fax: 609-228-5909

E-mail: tech@MedChemExpress.com

Address: 1 Deer Park Dr, Suite Q, Monmouth Junction, NJ 08852, USA