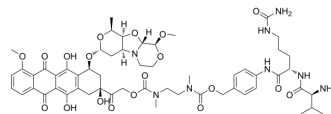


vc-PAB-DMEA-PNU159682

Cat. No.:	HY-147093
CAS No.:	2227350-96-9
Molecular Formula:	C ₅₆ H ₇₂ N ₈ O ₁₉
Molecular Weight:	1161.21
Target:	ADC Linker
Pathway:	Antibody-drug Conjugate/ADC Related
Storage:	Please store the product under the recommended conditions in the Certificate of Analysis.



BIOLOGICAL ACTIVITY

Description	vc-PAB-DMEA-PNU159682 (compound 1.47) can be used to synthesize the ADC molecule based on Sulfomaleimide-based Linker. vc-PAB-DMEA-PNU159682 has good serum stability ^[1] .
IC ₅₀ & Target	Protease Cleavable

REFERENCES

[1]. Michel Perez, et al. Sulfomaleimide-based linkers and corresponding conjugates. WO2020065408A1.

Caution: Product has not been fully validated for medical applications. For research use only.

Tel: 609-228-6898

Fax: 609-228-5909

E-mail: tech@MedChemExpress.com

Address: 1 Deer Park Dr, Suite Q, Monmouth Junction, NJ 08852, USA