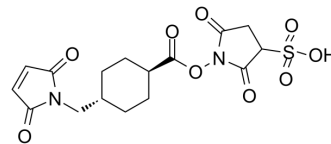


## trans-Sulfo-SMCC

Cat. No.:	HY-126503
CAS No.:	1286837-77-1
Molecular Formula:	C <sub>16</sub> H <sub>18</sub> N <sub>2</sub> O <sub>9</sub> S
Molecular Weight:	414.39
Target:	ADC Linkers
Pathway:	Antibody-drug Conjugate/ADC Related
Storage:	Please store the product under the recommended conditions in the Certificate of Analysis.



### BIOLOGICAL ACTIVITY

Description	trans-Sulfo-SMCC is a non-cleavable and membrane permeable ADC crosslinker.
IC <sub>50</sub> & Target	Non-cleavable

**Caution: Product has not been fully validated for medical applications. For research use only.**

Tel: 609-228-6898

Fax: 609-228-5909

E-mail: [tech@MedChemExpress.com](mailto:tech@MedChemExpress.com)

Address: 1 Deer Park Dr, Suite Q, Monmouth Junction, NJ 08852, USA