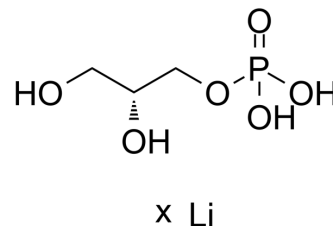


sn-Glycerol 3-phosphate lithium

Cat. No.:	HY-113128A
Molecular Formula:	C ₃ H ₉ O ₆ P.xLi
Target:	Endogenous Metabolite
Pathway:	Metabolic Enzyme/Protease
Storage:	4°C, sealed storage, away from moisture * In solvent : -80°C, 6 months; -20°C, 1 month (sealed storage, away from moisture)



SOLVENT & SOLUBILITY

In Vitro	H ₂ O : 50 mg/mL (Need ultrasonic)
In Vivo	1. Add each solvent one by one: PBS Solubility: 50 mg/mL (Infinity mM); Clear solution; Need ultrasonic

BIOLOGICAL ACTIVITY

Description	sn-Glycerol 3-phosphate lithium is produced by cytosolic glycerol 3-phosphate dehydrogenase pathway through the reduction of dihydroxyacetone phosphate using NADH formed during glycolysis.
IC ₅₀ & Target	Human Endogenous Metabolite

Caution: Product has not been fully validated for medical applications. For research use only.

Tel: 609-228-6898

Fax: 609-228-5909

E-mail: tech@MedChemExpress.com

Address: 1 Deer Park Dr, Suite Q, Monmouth Junction, NJ 08852, USA