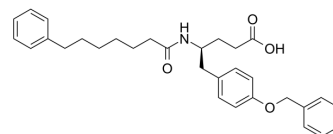


## sPLA2 inhibitor 1

<b>Cat. No.:</b>	HY-11059
<b>CAS No.:</b>	393569-31-8
<b>Molecular Formula:</b>	C <sub>31</sub> H <sub>37</sub> NO <sub>4</sub>
<b>Molecular Weight:</b>	487.63
<b>Target:</b>	Phospholipase
<b>Pathway:</b>	Metabolic Enzyme/Protease
<b>Storage:</b>	-20°C, sealed storage, away from moisture and light * In solvent : -80°C, 6 months; -20°C, 1 month (sealed storage, away from moisture and light)



### BIOLOGICAL ACTIVITY

<b>Description</b>	sPLA2 inhibitor 1, a D-tyrosine derivative, is an orally active, potent secretory phospholipase A <sub>2</sub> (sPLA <sub>2</sub> ) inhibitor with an IC <sub>50</sub> of 29 nM for human nonpancreatic secretory PLA <sub>2</sub> isoform IIa (hnpsPLA <sub>2</sub> -IIa). sPLA2 inhibitor 1 has anti-inflammatory activity <sup>[1]</sup> .
<b>IC<sub>50</sub> &amp; Target</b>	sPLA2 29 nM (IC <sub>50</sub> )
<b>In Vivo</b>	sPLA2 inhibitor 1 (compound 2b; oral; 5 mg/kg/day; on Days 10-13 after inoculation with arthritogen) shows substantial inhibition of the oedema. Drug-treated rats shows mild capsular oedema and minimal infiltration of macrophages into the red pulp <sup>[1]</sup> . MCE has not independently confirmed the accuracy of these methods. They are for reference only.

### REFERENCES

[1]. Karl A Hansford, et al. D-Tyrosine as a chiral precursor to potent inhibitors of human nonpancreatic secretory phospholipase A<sub>2</sub> (IIa) with antiinflammatory activity. *Chembiochem*. 2003 Mar 3;4(2-3):181-5.

**Caution: Product has not been fully validated for medical applications. For research use only.**

Tel: 609-228-6898

Fax: 609-228-5909

E-mail: tech@MedChemExpress.com

Address: 1 Deer Park Dr, Suite Q, Monmouth Junction, NJ 08852, USA