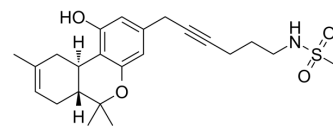


## rel-O-2050

Cat. No.:	HY-110020
CAS No.:	851320-29-1
Molecular Formula:	C <sub>23</sub> H <sub>31</sub> NO <sub>4</sub> S
Molecular Weight:	417.56
Target:	Cannabinoid Receptor
Pathway:	GPCR/G Protein; Neuronal Signaling
Storage:	Please store the product under the recommended conditions in the Certificate of Analysis.



Relative stereochemistry

## BIOLOGICAL ACTIVITY

Description	rel-O-2050 (Compound O-2050) is a neutral cannabinoid CB <sub>1</sub> receptor antagonist. rel-O-2050 also decreases food intake in mice <sup>[1]</sup> .
IC <sub>50</sub> & Target	CB1

## REFERENCES

[1]. Wiley JL, et al. Structural and pharmacological analysis of O-2050, a putative neutral cannabinoid CB(1) receptor antagonist. Eur J Pharmacol. 2011 Jan 25;651(1-3):96-105.

**Caution: Product has not been fully validated for medical applications. For research use only.**

Tel: 609-228-6898

Fax: 609-228-5909

E-mail: tech@MedChemExpress.com

Address: 1 Deer Park Dr, Suite Q, Monmouth Junction, NJ 08852, USA