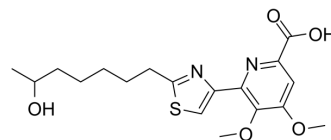


## (±)-WS75624B

<b>Cat. No.:</b>	HY-100312
<b>CAS No.:</b>	188048-45-5
<b>Molecular Formula:</b>	C <sub>18</sub> H <sub>24</sub> N <sub>2</sub> O <sub>5</sub> S
<b>Molecular Weight:</b>	380.46
<b>Target:</b>	Others
<b>Pathway:</b>	Others
<b>Storage:</b>	Please store the product under the recommended conditions in the Certificate of Analysis.



### BIOLOGICAL ACTIVITY

<b>Description</b>	(±)-WS75624B is an endothelin converting enzyme (ECE) inhibitor with an IC <sub>50</sub> of 0.03 µg/mL.
<b>IC<sub>50</sub> &amp; Target</b>	IC <sub>50</sub> : 0.03 µg/mL (ECE) <sup>[1]</sup>
<b>In Vitro</b>	Endothelin converting enzyme (ECE) inhibitors, WS75624A and (±)-WS75624B, have been isolated from the fermentation broth of <i>Saccharothrix</i> sp. No. 75624. WS75624A and (±)-WS75624B show highly potent ECE inhibitory activity, and both have IC <sub>50</sub> s of 0.03 µg/mL. WS75624A and (±)-WS75624B also show other metalloprotease (collagenase and neutral endopeptidase) inhibitory activity with IC <sub>50</sub> s of 1 µg/mL. (±)-WS75624B markedly inhibits ECE activity with an IC <sub>50</sub> value of 0.03 µg/mL, while it weakly inhibits collagenase and NEP activities with IC <sub>50</sub> s of 1.0 µg/mL and 1.25 µg/mL, respectively <sup>[1]</sup> . MCE has not independently confirmed the accuracy of these methods. They are for reference only.
<b>In Vivo</b>	(±)-WS75624B inhibits big endothelin-induced pressor effect when administered to SD rat intravenously with big ET-1. WS75624 B (30 mg/kg) markedly attenuates the hypertensive effect of big ET-1 (1 nmol/kg, iv) by inhibiting the conversion of big ET-1 to ET-1 <sup>[1]</sup> . MCE has not independently confirmed the accuracy of these methods. They are for reference only.

### PROTOCOL

<b>Animal Administration</b> <sup>[1]</sup>	Rats <sup>[1]</sup> Male Sprague-Dawley rats (250-300 g) are anesthetized with Pentobarbital sodium (50 mg/kg of body weight). A femoral artery catheter is implanted for monitoring arterial pressure and heart rate, and a femoral vein catheter is used for injection of saline or drugs. Blood pressure and heart rate is recorded from the femoral artery through a cannula (PE-50) connected to a pressure transducer coupled to a Biophysigraph RM 6000 system. Two groups of rats are injected with the following: Big ET-1 (1 nmol/kg) alone (n=7), big ET-1 (1 nmol/kg) with (±)-WS75624B (30 mg/kg) iv bolus injection (n=7). MCE has not independently confirmed the accuracy of these methods. They are for reference only.
---	---

### REFERENCES

[1]. Tsurumi Y, et al. WS75624 A and B, new endothelin converting enzyme inhibitors isolated from *Saccharothrix* sp. No. 75624. I. Taxonomy, fermentation, isolation,

**Caution: Product has not been fully validated for medical applications. For research use only.**

Tel: 609-228-6898

Fax: 609-228-5909

E-mail: [tech@MedChemExpress.com](mailto:tech@MedChemExpress.com)

Address: 1 Deer Park Dr, Suite Q, Monmouth Junction, NJ 08852, USA