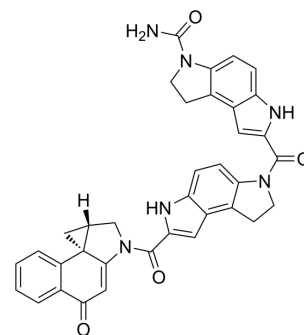


## (+)-CBI-CDPI2

<b>Cat. No.:</b>	HY-128881
<b>CAS No.:</b>	128300-15-2
<b>Molecular Formula:</b>	C <sub>36</sub> H <sub>28</sub> N <sub>6</sub> O <sub>4</sub>
<b>Molecular Weight:</b>	608.65
<b>Target:</b>	ADC Cytotoxin; DNA Alkylator/Crosslinker
<b>Pathway:</b>	Antibody-drug Conjugate/ADC Related; Cell Cycle/DNA Damage
<b>Storage:</b>	Please store the product under the recommended conditions in the Certificate of Analysis.



### BIOLOGICAL ACTIVITY

<b>Description</b>	(+)-CBI-CDPI2 is an enhanced functional analog of CC-1065. (+)-CBI-CDPI1 is a DNA alkylating agent. (+)-CBI-CDPI2 is an antibody agent conjugates (ADCs) toxin.
<b>IC<sub>50</sub> &amp; Target</b>	Duocarmycins

### REFERENCES

[1]. Boger DL, et al. Molecular basis for sequence selective DNA alkylation by (+)- and ent-(-)-CC-1065 and related agents: alkylation site models that accommodate the offset AT-rich adenine N3 alkylation selectivity. *Bioorg Med Chem.* 1994 Feb;2(2):115-35.

**Caution: Product has not been fully validated for medical applications. For research use only.**

Tel: 609-228-6898

Fax: 609-228-5909

E-mail: tech@MedChemExpress.com

Address: 1 Deer Park Dr, Suite Q, Monmouth Junction, NJ 08852, USA