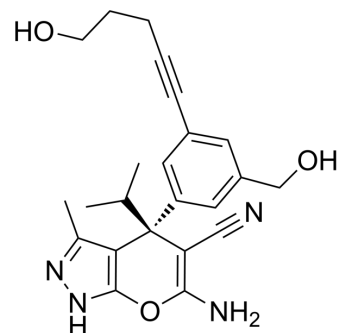


(-)-SHIN2

Cat. No.:	HY-134978B		
Molecular Formula:	C ₂₃ H ₂₆ N ₄ O ₃		
Molecular Weight:	406.48		
Target:	SHMT		
Pathway:	Metabolic Enzyme/Protease		
Storage:	Powder	-20°C	3 years
		4°C	2 years
	In solvent	-80°C	6 months
		-20°C	1 month



BIOLOGICAL ACTIVITY

Description

(-)-SHIN2 is the isomer of (+)-SHIN2 (HY-134978A). (+)-SHIN2 is an inhibitor of serine hydroxymethyltransferase (SHMT) with antileukemic effect. (+)-SHIN2 synergizes with Methotrexate (HY-14519) in vivo xenotransplantation models^[1]. (-)-SHIN2 is a click chemistry reagent, it contains an Alkyne group and can undergo copper-catalyzed azide-alkyne cycloaddition (CuAAC) with molecules containing Azide groups.

REFERENCES

[1]. García-Cañaveras JC, et al. SHMT inhibition is effective and synergizes with methotrexate in T-cell acute lymphoblastic leukemia. *Leukemia*. 2021 Feb;35(2):377-388.

Caution: Product has not been fully validated for medical applications. For research use only.

Tel: 609-228-6898

Fax: 609-228-5909

E-mail: tech@MedChemExpress.com

Address: 1 Deer Park Dr, Suite Q, Monmouth Junction, NJ 08852, USA