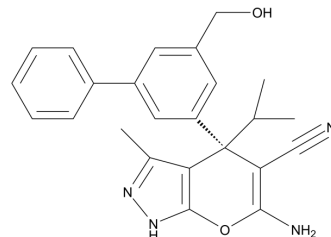


## (-)-SHIN1

Cat. No.:	HY-112066B
CAS No.:	2444764-09-2
Molecular Formula:	C <sub>24</sub> H <sub>24</sub> N <sub>4</sub> O <sub>2</sub>
Molecular Weight:	400.47
Target:	Others
Pathway:	Others
Storage:	4°C, stored under nitrogen * In solvent : -80°C, 6 months; -20°C, 1 month (stored under nitrogen)



### SOLVENT & SOLUBILITY

#### In Vitro

DMSO : ≥ 100 mg/mL (249.71 mM)

\* "≥" means soluble, but saturation unknown.

Preparing Stock Solutions	Solvent Concentration	Mass		
		1 mg	5 mg	10 mg
	1 mM	2.4971 mL	12.4853 mL	24.9707 mL
	5 mM	0.4994 mL	2.4971 mL	4.9941 mL
	10 mM	0.2497 mL	1.2485 mL	2.4971 mL

Please refer to the solubility information to select the appropriate solvent.

#### In Vivo

- Add each solvent one by one: 10% DMSO >> 40% PEG300 >> 5% Tween-80 >> 45% saline  
Solubility: ≥ 2.5 mg/mL (6.24 mM); Clear solution
- Add each solvent one by one: 10% DMSO >> 90% (20% SBE-β-CD in saline)  
Solubility: ≥ 2.5 mg/mL (6.24 mM); Clear solution
- Add each solvent one by one: 10% DMSO >> 90% corn oil  
Solubility: ≥ 2.5 mg/mL (6.24 mM); Clear solution

### BIOLOGICAL ACTIVITY

#### Description

(-)-SHIN1 ((-)-RZ-2994) is an inactive (-) enantiomer of SHIN1<sup>[1]</sup>.

### CUSTOMER VALIDATION

- Immunity. 2021 Aug 10;54(8):1728-1744.e7.

---

See more customer validations on [www.MedChemExpress.com](http://www.MedChemExpress.com)

## REFERENCES

---

[1]. Ducker GS, et al. Human SHMT inhibitors reveal defective glycine import as a targetable metabolic vulnerability of diffuse large B-cell lymphoma. Proc Natl Acad Sci U S A. 2017 Oct 24;114(43):11404-11409.

---

**Caution: Product has not been fully validated for medical applications. For research use only.**

Tel: 609-228-6898

Fax: 609-228-5909

E-mail: [tech@MedChemExpress.com](mailto:tech@MedChemExpress.com)

Address: 1 Deer Park Dr, Suite Q, Monmouth Junction, NJ 08852, USA