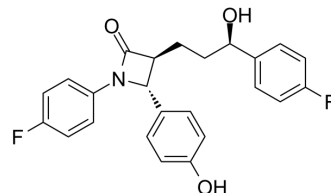


ent-Ezetimibe

Cat. No.:	HY-135388
CAS No.:	1376614-99-1
Molecular Formula:	C ₂₄ H ₂₁ F ₂ NO ₃
Molecular Weight:	409.43
Target:	Drug Metabolite
Pathway:	Metabolic Enzyme/Protease
Storage:	Please store the product under the recommended conditions in the Certificate of Analysis.



BIOLOGICAL ACTIVITY

Description

ent-Ezetimibe (ent-SCH 58235) is the RRS-enantiomer of Ezetimibe. Ezetimibe is a potent cholesterol absorption inhibitor. Ezetimibe is a Niemann-Pick C1-like1 (NPC1L1) inhibitor, and is a potent Nrf2 activator^[1].

REFERENCES

[1]. Lee DH, et al. Ezetimibe, an NPC1L1 inhibitor, is a potent Nrf2 activator that protects mice from diet-induced nonalcoholic steatohepatitis. *Free Radic Biol Med.* 2016 Sep 12;99:520-532.

[2]. Yijun Zhu, et al. Efficient and scalable process for the synthesis of antihypercholesterolemic drug ezetimibe. *An International Journal for Rapid Communication of Synthetic Organic Chemistry*

Caution: Product has not been fully validated for medical applications. For research use only.

Tel: 609-228-6898

Fax: 609-228-5909

E-mail: tech@MedChemExpress.com

Address: 1 Deer Park Dr, Suite Q, Monmouth Junction, NJ 08852, USA