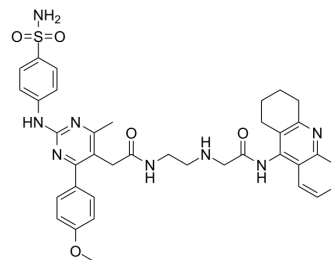


## eeAChE-IN-2

Cat. No.:	HY-132904
CAS No.:	2763366-33-0
Molecular Formula:	C <sub>37</sub> H <sub>40</sub> N <sub>8</sub> O <sub>5</sub> S
Molecular Weight:	708.83
Target:	Cholinesterase (ChE)
Pathway:	Neuronal Signaling
Storage:	Please store the product under the recommended conditions in the Certificate of Analysis.



### BIOLOGICAL ACTIVITY

Description	eeAChE-IN-2 is a potent eeAChE inhibitor with an IC <sub>50</sub> value of 2 nM.
IC <sub>50</sub> & Target	AChE

### REFERENCES

[1]. Javed MA, et al. Structural Modification, In Vitro, In Vivo, Ex Vivo, and In Silico Exploration of Pyrimidine and Pyrrolidine Cores for Targeting Enzymes Associated with Neuroinflammation and Cholinergic Deficit in Alzheimer's Disease. ACS Chem Neurosci. 2021 Nov 3;12(21):4123-4143.

**Caution: Product has not been fully validated for medical applications. For research use only.**

Tel: 609-228-6898

Fax: 609-228-5909

E-mail: tech@MedChemExpress.com

Address: 1 Deer Park Dr, Suite Q, Monmouth Junction, NJ 08852, USA