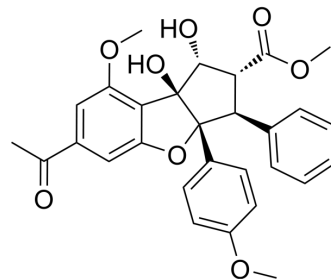


eIF4A3-IN-16

Cat. No.:	HY-148450
CAS No.:	1402931-74-1
Molecular Formula:	C ₂₉ H ₂₈ O ₈
Molecular Weight:	504.53
Target:	Eukaryotic Initiation Factor (eIF)
Pathway:	Cell Cycle/DNA Damage
Storage:	4°C, sealed storage, away from moisture and light * In solvent : -80°C, 6 months; -20°C, 1 month (sealed storage, away from moisture and light)



BIOLOGICAL ACTIVITY

Description

eIF4A3-IN-16 (compound 60) is a [silvestrol](#) (HY-13251) analogue. eIF4A3-IN-16 interferes the assembling of eIF4F translation complex with EC₅₀s of 1, 30 and 1 nM for myc-LUC, tub-LUC and the growth inhibition for MBA-MB-231 cells. eIF4A3-IN-16 can be used for the research of human cancer pathogenesis^[1].

REFERENCES

[1]. Liu T, et al. Synthetic silvestrol analogues as potent and selective protein synthesis inhibitors. J Med Chem. 2012 Oct 25;55(20):8859-78.

Caution: Product has not been fully validated for medical applications. For research use only.

Tel: 609-228-6898

Fax: 609-228-5909

E-mail: tech@MedChemExpress.com

Address: 1 Deer Park Dr, Suite Q, Monmouth Junction, NJ 08852, USA