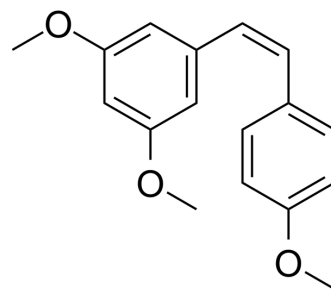


cis-Trismethoxy resveratrol

Cat. No.:	HY-121989
CAS No.:	94608-23-8
Molecular Formula:	C ₁₇ H ₁₈ O ₃
Molecular Weight:	270.32
Target:	Microtubule/Tubulin
Pathway:	Cell Cycle/DNA Damage; Cytoskeleton
Storage:	Please store the product under the recommended conditions in the Certificate of Analysis.



BIOLOGICAL ACTIVITY

Description

Cis-trismethoxy resveratrol is a potent anti-mitotic reagent. Cis-trismethoxy resveratrol inhibits tubulin polymerization with an IC₅₀ value of 4 μM^[1].

REFERENCES

[1]. Schneider Y, et al. Resveratrol analog (Z)-3,5,4'-trimethoxystilbene is a potent anti-mitotic drug inhibiting tubulin polymerization. *Int J Cancer*. 2003 Nov 1;107(2):189-96.

Caution: Product has not been fully validated for medical applications. For research use only.

Tel: 609-228-6898

Fax: 609-228-5909

E-mail: tech@MedChemExpress.com

Address: 1 Deer Park Dr, Suite Q, Monmouth Junction, NJ 08852, USA