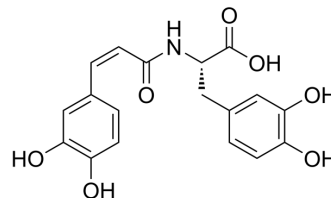


## cis-Clovamide

Cat. No.:	HY-122267A
CAS No.:	53755-03-6
Molecular Formula:	C <sub>18</sub> H <sub>17</sub> NO <sub>7</sub>
Molecular Weight:	359.33
Target:	Apoptosis
Pathway:	Apoptosis
Storage:	Please store the product under the recommended conditions in the Certificate of Analysis.



### BIOLOGICAL ACTIVITY

Description	cis-Clovamide, a natural phenolic compound with antioxidant, anti-inflammatory and antiapoptotic activities <sup>[1]</sup> .
In Vitro	cis-Clovamide is a natural phenolic found in <i>C. pentandra</i> ethyl acetate extract <sup>[1]</sup> . MCE has not independently confirmed the accuracy of these methods. They are for reference only.

### REFERENCES

[1]. Mohamed E Abouelela, et al. Ethyl acetate extract of *Ceiba pentandra* (L.) Gaertn. reduces methotrexate-induced renal damage in rats via antioxidant, anti-inflammatory, and antiapoptotic actions. *J Tradit Complement Med.* 2019 Aug 28;10(5):478-486.

**Caution: Product has not been fully validated for medical applications. For research use only.**

Tel: 609-228-6898

Fax: 609-228-5909

E-mail: tech@MedChemExpress.com

Address: 1 Deer Park Dr, Suite Q, Monmouth Junction, NJ 08852, USA