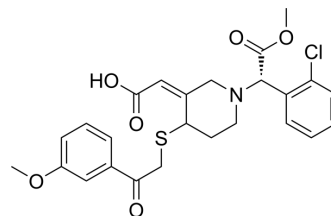


cis-Clopidogrel-MP derivative

Cat. No.:	HY-133781
CAS No.:	1122047-98-6
Molecular Formula:	C ₂₅ H ₂₆ ClNO ₆ S
Molecular Weight:	504
Target:	Drug Metabolite
Pathway:	Metabolic Enzyme/Protease
Storage:	Please store the product under the recommended conditions in the Certificate of Analysis.



BIOLOGICAL ACTIVITY

Description

cis-Clopidogrel-MP derivative (Clopidogrel-MP-AM) is a 3'-methoxyacetophenone derivative of Clopidogrel active metabolite [1]. Clopidogrel is an orally active platelet inhibitor that targets P2Y₁₂ receptor[2].

REFERENCES

- [1]. Makoto Takahashi, et al. Quantitative determination of clopidogrel active metabolite in human plasma by LC-MS/MS. *harm Biomed Anal.* 2008 Dec 1;48(4):1219-24.
- [2]. Zongyu Zheng, et al. Clopidogrel Reduces Fibronectin Accumulation and Improves Diabetes-Induced Renal Fibrosis. *Int J Biol Sci.* 2019 Jan.

Caution: Product has not been fully validated for medical applications. For research use only.

Tel: 609-228-6898

Fax: 609-228-5909

E-mail: tech@MedChemExpress.com

Address: 1 Deer Park Dr, Suite Q, Monmouth Junction, NJ 08852, USA