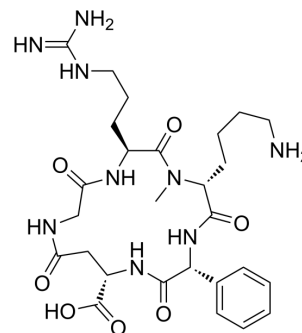


## c(phg-isoDGR-(NMe)k)

<b>Cat. No.:</b>	HY-111413
<b>CAS No.:</b>	1844830-65-4
<b>Molecular Formula:</b>	C <sub>27</sub> H <sub>41</sub> N <sub>9</sub> O <sub>7</sub>
<b>Molecular Weight:</b>	603.67
<b>Target:</b>	Integrin
<b>Pathway:</b>	Cytoskeleton
<b>Storage:</b>	Please store the product under the recommended conditions in the Certificate of Analysis.



### BIOLOGICAL ACTIVITY

<b>Description</b>	c(phg-isoDGR-(NMe)k) is a selective and potent $\alpha 5\beta 1$ -integrin ligand with an IC <sub>50</sub> of 2.9 nM <sup>[1]</sup> .
<b>IC<sub>50</sub> &amp; Target</b>	IC <sub>50</sub> : 2.9 nM ( $\alpha 5\beta 1$ ) <sup>[1]</sup>
<b>In Vivo</b>	c(phg-isoDGR-(NMe)k) is trimerized with the chelator TRAP and used as a positron-emission tomography tracer for monitoring $\alpha 5\beta 1$ integrin expression in a M21 mouse xenograft <sup>[1]</sup> . MCE has not independently confirmed the accuracy of these methods. They are for reference only.

### REFERENCES

[1]. Kapp TG, et al. N-Methylation of isoDGR Peptides: Discovery of a Selective  $\alpha 5\beta 1$ -Integrin Ligand as a Potent Tumor Imaging Agent. *J Med Chem.* 2018 Mar 22;61(6):2490-2499.

**Caution: Product has not been fully validated for medical applications. For research use only.**

Tel: 609-228-6898

Fax: 609-228-5909

E-mail: tech@MedChemExpress.com

Address: 1 Deer Park Dr, Suite Q, Monmouth Junction, NJ 08852, USA