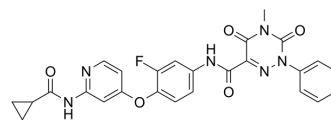


c-Met-IN-10

Cat. No.:	HY-146274
CAS No.:	2415291-03-9
Molecular Formula:	C ₂₆ H ₂₁ FN ₆ O ₅
Molecular Weight:	516.48
Target:	c-Met/HGFR; Apoptosis
Pathway:	Protein Tyrosine Kinase/RTK; Apoptosis
Storage:	Please store the product under the recommended conditions in the Certificate of Analysis.



BIOLOGICAL ACTIVITY

Description	c-Met-IN-10 (compound 26a) is a highly potent c-Met kinase inhibitor with an IC ₅₀ value of 16 nM. c-Met-IN-10 has inhibitory activity against cancer cells A549, H460 and HT-29 with IC ₅₀ s of 0.56 ~ 1.59 μM. c-Met-IN-10 suppresses the colony formation on HT-29 cells, induces HT-29 and A549 cells apoptosis, and inhibits A549 cells motility. c-Met-IN-10 can be used for researching anticancer ^[1] .
IC ₅₀ & Target	c-Met 16 nM (IC ₅₀)

REFERENCES

[1]. Liu J, et al. Design, synthesis and biological evaluation of novel N-[4-(2-fluorophenoxy)pyridin-2-yl]cyclopropanecarboxamide derivatives as potential c-Met kinase inhibitors. *Eur J Med Chem.* 2020;194:112244.

Caution: Product has not been fully validated for medical applications. For research use only.

Tel: 609-228-6898

Fax: 609-228-5909

E-mail: tech@MedChemExpress.com

Address: 1 Deer Park Dr, Suite Q, Monmouth Junction, NJ 08852, USA