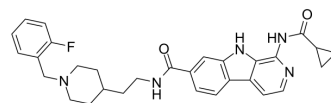


ZLWH-23

Cat. No.:	HY-144316
CAS No.:	2765251-12-3
Molecular Formula:	C ₃₀ H ₃₂ FN ₅ O ₂
Molecular Weight:	513.61
Target:	AChE; GSK-3
Pathway:	Neuronal Signaling; PI3K/Akt/mTOR; Stem Cell/Wnt
Storage:	Please store the product under the recommended conditions in the Certificate of Analysis.



BIOLOGICAL ACTIVITY

Description	ZLWH-23 is a selective AChE inhibitor (IC ₅₀ =0.27 μM) with GSK-3β inhibitory property (IC ₅₀ =6.78 μM). ZLWH-23 possesses selectivity for AChE over BChE (IC ₅₀ =20.82 μM) and for GSK-3β over multi-kinases. ZLWH-23 has the potential for the research of Alzheimer's disease ^[1] .	
IC₅₀ & Target	GSK-3β 6.78 μM (IC ₅₀)	AChE 0.27 μM (IC ₅₀)
In Vitro	ZLWH-23 exhibits good selectivity for GSK-3β over multi-kinases and very low cytotoxicity towards SH-SY5Y, HEK-293T, HL-7702, and HepG2 cell lines ^[1] . MCE has not independently confirmed the accuracy of these methods. They are for reference only.	
In Vivo	ZLWH-23 displays efficient reduction against tau hyperphosphorylation on Ser-396 site in Tau (P301L) 293T cell model ^[1] . MCE has not independently confirmed the accuracy of these methods. They are for reference only.	

REFERENCES

[1]. Liu W, et al. Discovery of novel β-carboline derivatives as selective AChE inhibitors with GSK-3β inhibitory property for the treatment of Alzheimer's disease. Eur J Med Chem. 2022;229:114095.

Caution: Product has not been fully validated for medical applications. For research use only.

Tel: 609-228-6898

Fax: 609-228-5909

E-mail: tech@MedChemExpress.com

Address: 1 Deer Park Dr, Suite Q, Monmouth Junction, NJ 08852, USA