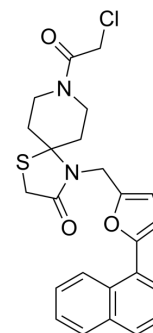


## ZL-Pin13

Cat. No.:	HY-143903
CAS No.:	2883498-73-3
Molecular Formula:	C <sub>24</sub> H <sub>23</sub> ClN <sub>2</sub> O <sub>3</sub> S
Molecular Weight:	454.97
Target:	PIN1
Pathway:	PI3K/Akt/mTOR
Storage:	Please store the product under the recommended conditions in the Certificate of Analysis.



### BIOLOGICAL ACTIVITY

#### Description

ZL-Pin13 is a high potent cell-active covalent inhibitor targeting the Pin1 (Peptidyl-Prolyl Isomerase NIMA-Interacting-1) with an IC<sub>50</sub> of 67 nM. ZL-Pin13 effectively inhibits the proliferation and downregulated the Pin1 substrates in MDA-MB-231 cells<sup>[1]</sup>.

### REFERENCES

[1]. Liu L, et al. Computational and Structure-Based Development of High Potent Cell-Active Covalent Inhibitor Targeting the Peptidyl-Prolyl Isomerase NIMA-Interacting-1 (Pin1). *J Med Chem.* 2022;65(3):2174-2190.

**Caution: Product has not been fully validated for medical applications. For research use only.**

Tel: 609-228-6898

Fax: 609-228-5909

E-mail: tech@MedChemExpress.com

Address: 1 Deer Park Dr, Suite Q, Monmouth Junction, NJ 08852, USA