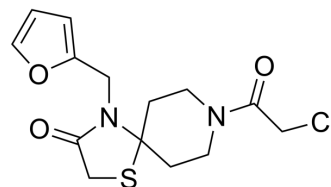


ZL-Pin01

Cat. No.:	HY-143902
CAS No.:	1047464-92-5
Molecular Formula:	C ₁₄ H ₁₇ ClN ₂ O ₃ S
Molecular Weight:	328.81
Target:	PIN1
Pathway:	PI3K/Akt/mTOR
Storage:	Please store the product under the recommended conditions in the Certificate of Analysis.



BIOLOGICAL ACTIVITY

Description

ZL-Pin01 is a high potent covalent Pin1 (Peptidyl-Prolyl Isomerase NIMA-Interacting-1) inhibitor. ZL-Pin01 shows potent disruption of the Pin1-substrate interaction with an IC₅₀ of 1.33 μM^[1].

REFERENCES

[1]. Liu L, et al. Computational and Structure-Based Development of High Potent Cell-Active Covalent Inhibitor Targeting the Peptidyl-Prolyl Isomerase NIMA-Interacting-1 (Pin1). *J Med Chem.* 2022;65(3):2174-2190.

Caution: Product has not been fully validated for medical applications. For research use only.

Tel: 609-228-6898

Fax: 609-228-5909

E-mail: tech@MedChemExpress.com

Address: 1 Deer Park Dr, Suite Q, Monmouth Junction, NJ 08852, USA