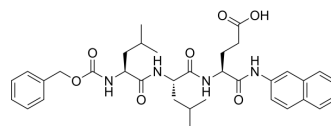


Z-Leu-Leu-Glu-βNA

Cat. No.:	HY-137286
CAS No.:	75873-85-7
Molecular Formula:	C ₃₅ H ₄₄ N ₄ O ₇
Molecular Weight:	632.75
Sequence:	Z-Leu-Leu-Glu-βNA
Sequence Shortening:	Z-LLE-βNA
Target:	Proteasome
Pathway:	Metabolic Enzyme/Protease
Storage:	Please store the product under the recommended conditions in the Certificate of Analysis.



BIOLOGICAL ACTIVITY

Description	Z-Leu-Leu-Glu-βNA (Z-Leu-Leu-Glu-β-naphthylamide) is a substrate for determination of the glutamylpeptidyl-peptide hydrolase activity of the 20S proteasome ^[1] .
-------------	--

REFERENCES

[1]. Reidlinger J, et al. Catalytic properties of 26 S and 20 S proteasomes and radiolabeling of MB1, LMP7, and C7 subunits associated with trypsin-like and chymotrypsin-like activities. J Biol Chem. 1997 Oct 3;272(40):24899-905.

Caution: Product has not been fully validated for medical applications. For research use only.

Tel: 609-228-6898

Fax: 609-228-5909

E-mail: tech@MedChemExpress.com

Address: 1 Deer Park Dr, Suite Q, Monmouth Junction, NJ 08852, USA