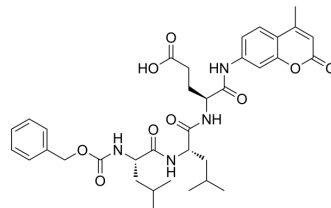


Z-Leu-Leu-Glu-AMC

Cat. No.:	HY-123053
CAS No.:	348086-66-8
Molecular Formula:	C ₃₅ H ₄₄ N ₄ O ₉
Molecular Weight:	664.75
Sequence:	{Z}-Leu-Leu-Glu-{AMC}
Sequence Shortening:	{Z}-LLE-{AMC}
Target:	Proteasome
Pathway:	Metabolic Enzyme/Protease
Storage:	Please store the product under the recommended conditions in the Certificate of Analysis.



BIOLOGICAL ACTIVITY

Description	Z-Leu-Leu-Glu-AMC is a substrate peptide, and can be used for determination of postacidic-like hydrolysing activity of 20S proteasome ^[1]
-------------	--

REFERENCES

[1]. McNaught KS, et al. Proteasomal function is impaired in substantia nigra in Parkinson's disease. *Neurosci Lett.* 2001 Jan 19;297(3):191-4.

Caution: Product has not been fully validated for medical applications. For research use only.

Tel: 609-228-6898

Fax: 609-228-5909

E-mail: tech@MedChemExpress.com

Address: 1 Deer Park Dr, Suite Q, Monmouth Junction, NJ 08852, USA