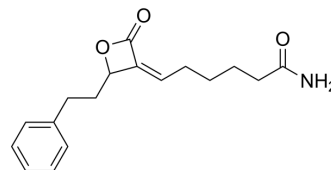


## (Z)-KC02

Cat. No.:	HY-121892
CAS No.:	1646795-60-9
Molecular Formula:	C <sub>17</sub> H <sub>21</sub> NO <sub>3</sub>
Molecular Weight:	287.35
Target:	Liposome
Pathway:	Metabolic Enzyme/Protease
Storage:	Solution, -20°C, 2 years



### BIOLOGICAL ACTIVITY

<b>Description</b>	(Z)-KC02 is an inhibitor of ABHD16A, the phosphatidylserine (PS) lipase that produces lyso-PS. Lysophosphatidylserine (lyso-PS) is a signaling lipid that regulates immune and neurological processes. It is associated with several neurological disorders such as retinitis pigmentosa and cataracts (PHARC). (Z)-KC02 depletes lyso-PS in lymphoblasts from PHARC subjects. (Z)-KC02 also reduces lyso-PS and lipopolysaccharide-induced cytokine production in macrophages and modulates lyso-PS metabolism in vivo <sup>[1]</sup> .
<b>In Vitro</b>	(Z)-KC02 disrupts ABHD16A in mouse macrophages, thereby reducing lyso-PS levels <sup>[1]</sup> . MCE has not independently confirmed the accuracy of these methods. They are for reference only.

### REFERENCES

[1]. Kamat SS, Camara K, Parsons WH, Chen DH, Dix MM, Bird TD, Howell AR, Cravatt BF. Immunomodulatory lysophosphatidylserines are regulated by ABHD16A and ABHD12 interplay. *Nat Chem Biol.* 2015 Feb;11(2):164-71.

**Caution: Product has not been fully validated for medical applications. For research use only.**

Tel: 609-228-6898

Fax: 609-228-5909

E-mail: tech@MedChemExpress.com

Address: 1 Deer Park Dr, Suite Q, Monmouth Junction, NJ 08852, USA