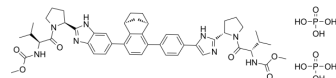


## Yimitasvir diphosphate

<b>Cat. No.:</b>	HY-147358
<b>CAS No.:</b>	1959593-63-5
<b>Molecular Formula:</b>	C <sub>49</sub> H <sub>64</sub> N <sub>8</sub> O <sub>14</sub> P <sub>2</sub>
<b>Molecular Weight:</b>	1051.03
<b>Target:</b>	HCV
<b>Pathway:</b>	Anti-infection
<b>Storage:</b>	4°C, sealed storage, away from moisture * In solvent : -80°C, 6 months; -20°C, 1 month (sealed storage, away from moisture)



### SOLVENT & SOLUBILITY

<b>In Vitro</b>	DMSO : 100 mg/mL (95.14 mM; Need ultrasonic)					
	<b>Preparing Stock Solutions</b>	<b>Solvent Concentration</b>	<b>Mass</b>	<b>1 mg</b>	<b>5 mg</b>	<b>10 mg</b>
		<b>1 mM</b>		0.9514 mL	4.7572 mL	9.5145 mL
		<b>5 mM</b>		0.1903 mL	0.9514 mL	1.9029 mL
		<b>10 mM</b>		0.0951 mL	0.4757 mL	0.9514 mL
Please refer to the solubility information to select the appropriate solvent.						
<b>In Vivo</b>	<ol style="list-style-type: none"> <li>Add each solvent one by one: 10% DMSO &gt;&gt; 40% PEG300 &gt;&gt; 5% Tween-80 &gt;&gt; 45% saline Solubility: 2.5 mg/mL (2.38 mM); Clear solution; Need ultrasonic</li> <li>Add each solvent one by one: 10% DMSO &gt;&gt; 90% (20% SBE-β-CD in saline) Solubility: 2.5 mg/mL (2.38 mM); Clear solution; Need ultrasonic</li> <li>Add each solvent one by one: 10% DMSO &gt;&gt; 90% corn oil Solubility: 2.5 mg/mL (2.38 mM); Clear solution; Need ultrasonic</li> </ol>					

### BIOLOGICAL ACTIVITY

<b>Description</b>	Yimitasvir (Emitasvir) diphosphate is an orally active hepatitis C virus (HCV) nonstructural protein 5A (NS5A) inhibitor and can be used for research of chronic hepatitis C virus infection <sup>[1]</sup> .
--------------------	---

### REFERENCES

[1]. Huiying Rao, et al. Efficacy and Safety of All-oral Emitasvir and Sofosbuvir in Patients with Genotype 1b HCV Infections without Cirrhosis. J Clin Transl Hepatol. 2020 Sep 28;8(3):255-261.

---

**Caution: Product has not been fully validated for medical applications. For research use only.**

Tel: 609-228-6898

Fax: 609-228-5909

E-mail: [tech@MedChemExpress.com](mailto:tech@MedChemExpress.com)

Address: 1 Deer Park Dr, Suite Q, Monmouth Junction, NJ 08852, USA