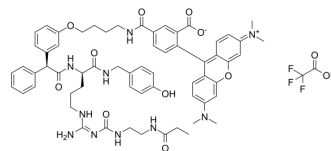


Y1R probe-1

Cat. No.:	HY-145837
CAS No.:	2773476-41-6
Molecular Formula:	C ₆₄ H ₇₁ F ₃ N ₁₀ O ₁₂
Molecular Weight:	1229.3
Target:	Neuropeptide Y Receptor
Pathway:	GPCR/G Protein; Neuronal Signaling
Storage:	Please store the product under the recommended conditions in the Certificate of Analysis.



BIOLOGICAL ACTIVITY

Description	Y1R probe-1 (Compound 39) is a high-affinity fluorescence probe for the Neuropeptide Y Y1 Receptor. Y1R probe-1 has the potential for the research of cancer disease ^[1] .
IC ₅₀ & Target	NPY _{Y1} receptor

REFERENCES

[1]. Müller C, et al. Structure-Based Design of High-Affinity Fluorescent Probes for the Neuropeptide Y Y1 Receptor. J Med Chem. 2022;65(6):4832-4853.

Caution: Product has not been fully validated for medical applications. For research use only.

Tel: 609-228-6898

Fax: 609-228-5909

E-mail: tech@MedChemExpress.com

Address: 1 Deer Park Dr, Suite Q, Monmouth Junction, NJ 08852, USA