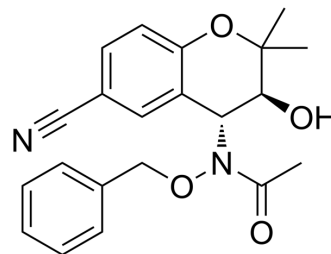


## Y-27152

Cat. No.:	HY-108582
CAS No.:	127408-30-4
Molecular Formula:	C <sub>21</sub> H <sub>22</sub> N <sub>2</sub> O <sub>4</sub>
Molecular Weight:	366.41
Target:	Potassium Channel
Pathway:	Membrane Transporter/Ion Channel
Storage:	Please store the product under the recommended conditions in the Certificate of Analysis.



## BIOLOGICAL ACTIVITY

Description	Y-27152, a proagent of the K <sub>ATP</sub> (Kir6) channel opener Y-26763, is a long-acting K <sup>+</sup> channel opener with less tachycardia: antihypertensive effects in hypertensive rats and dogs in conscious state <sup>[1][2]</sup> .
IC <sub>50</sub> & Target	K <sup>+</sup> channel <sup>[1]</sup> .

## REFERENCES

- [1]. Nakajima T, et al. Y-27152, a long-acting K<sup>+</sup> channel opener with less tachycardia: antihypertensive effects in hypertensive rats and dogs in conscious state. *J Pharmacol Exp Ther.* 1992 May;261(2):730-6.
- [2]. Fukunari A, et al. Y-26763 protects the canine heart from a stunning injury through opening of the K<sub>ATP</sub> channels. *Eur J Pharmacol.* 1997 Apr 4;323(2-3):197-204.

**Caution: Product has not been fully validated for medical applications. For research use only.**

Tel: 609-228-6898

Fax: 609-228-5909

E-mail: tech@MedChemExpress.com

Address: 1 Deer Park Dr, Suite Q, Monmouth Junction, NJ 08852, USA