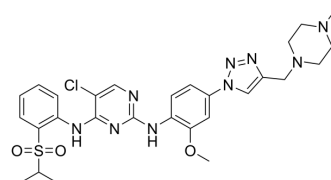


WY-135

Cat. No.:	HY-111416
CAS No.:	2163060-83-9
Molecular Formula:	C ₂₈ H ₃₄ ClN ₉ O ₃ S
Molecular Weight:	612.15
Target:	Anaplastic lymphoma kinase (ALK); ROS Kinase
Pathway:	Protein Tyrosine Kinase/RTK
Storage:	Please store the product under the recommended conditions in the Certificate of Analysis.



BIOLOGICAL ACTIVITY

Description	WY-135 is an ALK (IC ₅₀ =1.4 nM) and ROS1 (IC ₅₀ =1.1 nM) dual inhibitor.
IC ₅₀ & Target	IC ₅₀ : 1.4 nM (ALK), 1.1 nM (ROS1) ^[1]

REFERENCES

[1]. Wang Y, et al. Discovery of novel 2,4-diarylaminopyrimidine analogues as ALK and ROS1 dual inhibitors to overcome crizotinib-resistant mutants including G1202R. Eur J Med Chem. 2018 Jan 1;143:123-136.

Caution: Product has not been fully validated for medical applications. For research use only.

Tel: 609-228-6898

Fax: 609-228-5909

E-mail: tech@MedChemExpress.com

Address: 1 Deer Park Dr, Suite Q, Monmouth Junction, NJ 08852, USA