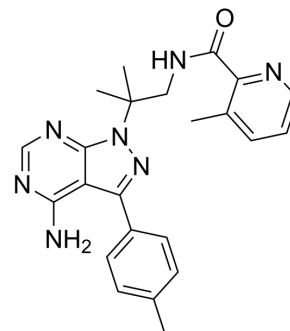


WEHI-345 analog

Cat. No.:	HY-100112		
CAS No.:	1354825-62-9		
Molecular Formula:	C ₂₃ H ₂₅ N ₇ O		
Molecular Weight:	415.49		
Target:	RIP kinase		
Pathway:	Apoptosis		
Storage:	Powder	-20°C	3 years
		4°C	2 years
	In solvent	-80°C	2 years
		-20°C	1 year



SOLVENT & SOLUBILITY

In Vitro

DMSO : 30 mg/mL (72.20 mM; Need ultrasonic and warming)

Concentration	Solvent	Mass		
		1 mg	5 mg	10 mg
Preparing Stock Solutions	1 mM	2.4068 mL	12.0340 mL	24.0680 mL
	5 mM	0.4814 mL	2.4068 mL	4.8136 mL
	10 mM	0.2407 mL	1.2034 mL	2.4068 mL

Please refer to the solubility information to select the appropriate solvent.

BIOLOGICAL ACTIVITY

Description

WEHI-345 analog is the analog of WEHI-345. WEHI-345 is a potent and selective RIPK2 kinase inhibitor with an IC₅₀ of 0.13 μM, which delays RIPK2 ubiquitylation and NF-κB activation on oligomerization domain (NOD) stimulation^[1].

IC₅₀ & Target

RIPK2

REFERENCES

[1]. Nachbur U, et al. A RIPK2 inhibitor delays NOD signalling events yet prevents inflammatory cytokine production. Nat Commun. 2015 Mar 17;6:6442.

Caution: Product has not been fully validated for medical applications. For research use only.

Tel: 609-228-6898

Fax: 609-228-5909

E-mail: tech@MedChemExpress.com

Address: 1 Deer Park Dr, Suite Q, Monmouth Junction, NJ 08852, USA