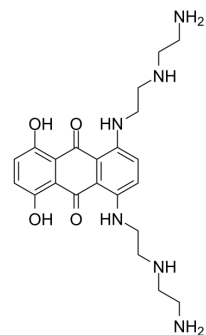


WEHI-150

Cat. No.:	HY-147740
CAS No.:	70492-21-6
Molecular Formula:	C ₂₂ H ₃₀ N ₆ O ₄
Molecular Weight:	442.51
Target:	DNA Alkylator/Crosslinker
Pathway:	Cell Cycle/DNA Damage
Storage:	Please store the product under the recommended conditions in the Certificate of Analysis.



BIOLOGICAL ACTIVITY

Description	WEHI-150 is a replica of mitoxantrone, is a potent DNA interstrand crosslink[1].
-------------	----------------------------------------------------------------------------------

REFERENCES

[1]. Pumuye PP, et al. Formaldehyde-activated WEHI-150 induces DNA interstrand crosslinks with unique structural features. *Bioorg Med Chem*. 2020 Feb 1;28(3):115260.

Caution: Product has not been fully validated for medical applications. For research use only.

Tel: 609-228-6898

Fax: 609-228-5909

E-mail: tech@MedChemExpress.com

Address: 1 Deer Park Dr, Suite Q, Monmouth Junction, NJ 08852, USA