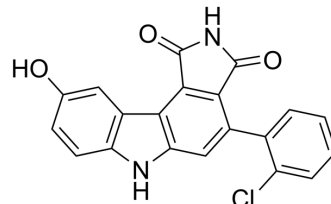


WEE1-IN-4

Cat. No.:	HY-108343		
CAS No.:	622855-37-2		
Molecular Formula:	C ₂₀ H ₁₁ ClN ₂ O ₃		
Molecular Weight:	362.77		
Target:	Wee1		
Pathway:	Cell Cycle/DNA Damage		
Storage:	Powder	-20°C	3 years
		4°C	2 years
	In solvent	-80°C	6 months
		-20°C	1 month



SOLVENT & SOLUBILITY

In Vitro	DMSO : 100 mg/mL (275.66 mM; Need ultrasonic)			
		Solvent Concentration	Mass	
			1 mg	5 mg
			10 mg	
	Preparing Stock Solutions	1 mM	2.7566 mL	13.7828 mL
	5 mM	0.5513 mL	2.7566 mL	
	10 mM	0.2757 mL	1.3783 mL	
	Please refer to the solubility information to select the appropriate solvent.			
In Vivo	1. Add each solvent one by one: 10% DMSO >> 40% PEG300 >> 5% Tween-80 >> 45% saline Solubility: ≥ 2.5 mg/mL (6.89 mM); Clear solution			
	2. Add each solvent one by one: 10% DMSO >> 90% (20% SBE-β-CD in saline) Solubility: ≥ 2.5 mg/mL (6.89 mM); Clear solution			

BIOLOGICAL ACTIVITY

Description	WEE1-IN-4 is a potent checkpoint Wee1 kinase inhibitor with an IC ₅₀ of 0.011 μM ^[1] .
IC ₅₀ & Target	IC ₅₀ : 0.011 μM (Wee1 kinase) pIC ₅₀ : 7.96 ^[1]

REFERENCES

[1]. Kanin Wichapong, et al. Receptor-based 3D-QSAR studies of checkpoint Wee1 kinase inhibitors. Eur J Med Chem. 2009 Apr;44(4):1383-95.

Caution: Product has not been fully validated for medical applications. For research use only.

Tel: 609-228-6898

Fax: 609-228-5909

E-mail: tech@MedChemExpress.com

Address: 1 Deer Park Dr, Suite Q, Monmouth Junction, NJ 08852, USA