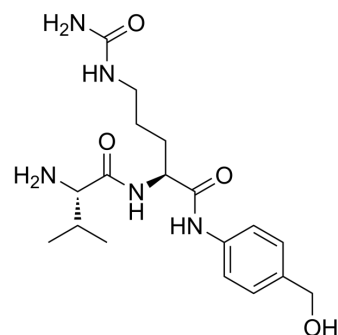


## Val-cit-PAB-OH

Cat. No.:	HY-12362
CAS No.:	159857-79-1
Molecular Formula:	C <sub>18</sub> H <sub>29</sub> N <sub>5</sub> O <sub>4</sub>
Molecular Weight:	379.45
Target:	ADC Linker
Pathway:	Antibody-drug Conjugate/ADC Related
Storage:	4°C, stored under nitrogen * In solvent : -80°C, 6 months; -20°C, 1 month (stored under nitrogen)



### SOLVENT & SOLUBILITY

In Vitro	DMSO : ≥ 100 mg/mL (263.54 mM)				
	* "≥" means soluble, but saturation unknown.				
	Preparing Stock Solutions	Mass	1 mg	5 mg	10 mg
		Solvent			
		Concentration			
	1 mM	2.6354 mL	13.1770 mL	26.3539 mL	
	5 mM	0.5271 mL	2.6354 mL	5.2708 mL	
	10 mM	0.2635 mL	1.3177 mL	2.6354 mL	
Please refer to the solubility information to select the appropriate solvent.					
In Vivo	1. Add each solvent one by one: 10% DMSO >> 40% PEG300 >> 5% Tween-80 >> 45% saline Solubility: ≥ 2.08 mg/mL (5.48 mM); Clear solution				
	2. Add each solvent one by one: 10% DMSO >> 90% (20% SBE-β-CD in saline) Solubility: ≥ 2.08 mg/mL (5.48 mM); Clear solution				
	3. Add each solvent one by one: 10% DMSO >> 90% corn oil Solubility: ≥ 2.08 mg/mL (5.48 mM); Clear solution				

### BIOLOGICAL ACTIVITY

Description	Val-cit-PAB-OH is a cleavable ADC linker.	
IC <sub>50</sub> & Target	Protease Cleavable Linker	Cleavable Linker

---

**Caution: Product has not been fully validated for medical applications. For research use only.**

Tel: 609-228-6898

Fax: 609-228-5909

E-mail: [tech@MedChemExpress.com](mailto:tech@MedChemExpress.com)

Address: 1 Deer Park Dr, Suite Q, Monmouth Junction, NJ 08852, USA