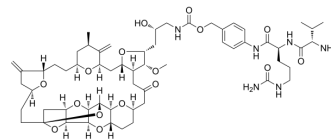


## VCP-Eribulin

<b>Cat. No.:</b>	HY-128871
<b>CAS No.:</b>	2130869-17-7
<b>Molecular Formula:</b>	C <sub>59</sub> H <sub>86</sub> N <sub>6</sub> O <sub>16</sub>
<b>Molecular Weight:</b>	1135.34
<b>Target:</b>	Drug-Linker Conjugates for ADC
<b>Pathway:</b>	Antibody-drug Conjugate/ADC Related
<b>Storage:</b>	Please store the product under the recommended conditions in the Certificate of Analysis.



### BIOLOGICAL ACTIVITY

<b>Description</b>	VCP-Eribulin consists the ADCs linker (VCP) and Eribulin <sup>[1]</sup> . Eribulin is a mechanistically unique microtubule inhibitor for cancer <sup>[2]</sup> . VCP-Eribulin is an Eribulin-based agent for antibody conjugates <sup>[1]</sup> .
<b>IC<sub>50</sub> &amp; Target</b>	Traditional Cytotoxic Agents

### REFERENCES

- [1]. Earl F Albone, et al. Eribulin-based antibody-drug conjugates and methods of use. US20170252458A1.
- [2]. Towle MJ, et al. Eribulin induces irreversible mitotic blockade: implications of cell-based pharmacodynamics for in vivo efficacy under intermittent dosing conditions. Cancer Res. 2011 Jan 15;71(2):496-505.

**Caution: Product has not been fully validated for medical applications. For research use only.**

Tel: 609-228-6898

Fax: 609-228-5909

E-mail: tech@MedChemExpress.com

Address: 1 Deer Park Dr, Suite Q, Monmouth Junction, NJ 08852, USA