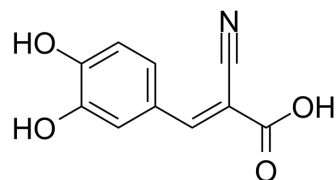


## Tyrphostin AG30

Cat. No.:	HY-118532		
CAS No.:	122520-79-0		
Molecular Formula:	C <sub>10</sub> H <sub>7</sub> NO <sub>4</sub>		
Molecular Weight:	205.17		
Target:	EGFR		
Pathway:	JAK/STAT Signaling; Protein Tyrosine Kinase/RTK		
Storage:	Powder	-20°C	3 years
		4°C	2 years
	In solvent	-80°C	6 months
		-20°C	1 month



### SOLVENT & SOLUBILITY

In Vitro	DMSO : 125 mg/mL (609.25 mM; Need ultrasonic)				
		Solvent Concentration	Mass 1 mg	5 mg	10 mg
	Preparing Stock Solutions	1 mM	4.8740 mL	24.3700 mL	48.7401 mL
		5 mM	0.9748 mL	4.8740 mL	9.7480 mL
		10 mM	0.4874 mL	2.4370 mL	4.8740 mL
Please refer to the solubility information to select the appropriate solvent.					
In Vivo	1. Add each solvent one by one: 10% DMSO >> 40% PEG300 >> 5% Tween-80 >> 45% saline Solubility: ≥ 2.08 mg/mL (10.14 mM); Clear solution  2. Add each solvent one by one: 10% DMSO >> 90% (20% SBE-β-CD in saline) Solubility: ≥ 2.08 mg/mL (10.14 mM); Clear solution				

### BIOLOGICAL ACTIVITY

Description	Tyrphostin AG30 (AG30) is a potent and selective EGFR tyrosine kinase inhibitor. Tyrphostin AG30 (AG30) selectively inhibits self renewal induction by c-ErbB, and is able to inhibit activation of STAT5 by c-ErbB in primary erythroblasts <sup>[1][2]</sup> .
-------------	--

### REFERENCES

- [1]. Volberg T, et al. The effect of tyrosine-specific protein phosphorylation on the assembly of adherens-type junctions. EMBO J. 1992 May;11(5):1733-42.
- [2]. Wessely O, et al. Distinct roles of the receptor tyrosine kinases c-ErbB and c-Kit in regulating the balance between erythroid cell proliferation and differentiation. Cell Growth Differ. 1997 May;8(5):481-93.

---

[3]. Banerjee S, et al. Epidermal growth factor induces WISP-2/CCN5 expression in estrogen receptor-alpha-positive breast tumor cells through multiple molecular cross-talks. Mol Cancer Res. 2005 Mar;3(3):151-62.

---

**Caution: Product has not been fully validated for medical applications. For research use only.**

Tel: 609-228-6898

Fax: 609-228-5909

E-mail: [tech@MedChemExpress.com](mailto:tech@MedChemExpress.com)

Address: 1 Deer Park Dr, Suite Q, Monmouth Junction, NJ 08852, USA