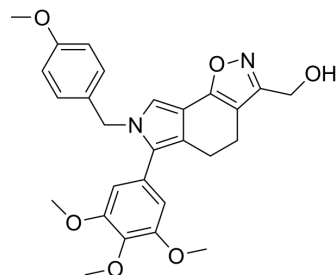


Tubulin polymerization-IN-33

Cat. No.:	HY-151394
Molecular Formula:	C ₂₇ H ₂₈ N ₂ O ₆
Molecular Weight:	476.52
Target:	Microtubule/Tubulin
Pathway:	Cell Cycle/DNA Damage; Cytoskeleton
Storage:	Please store the product under the recommended conditions in the Certificate of Analysis.



BIOLOGICAL ACTIVITY

Description	Tubulin polymerization-IN-33 is an inhibitor of [1,2]oxazoloisoindoles tubulin polymerization, exhibits high antiproliferative activity against the NCI panel ^[1] .								
IC₅₀ & Target	[1,2]oxazoloisoindoles tubulin polymerization ^[1]								
In Vitro	<p>Tubulin polymerization-IN-33 (compound 15K) (10 nM-100 μM; 72 h) has antiproliferative activity against 9 NCI subpanels (leukemia, non-small-cell lung, colon, central nervous system, melanoma, ovarian, renal, prostate, breast) with GI₅₀s ranging from 0.03 μM to 17.7 μM, and a mean graph_mid point (MG_MID) values of 0.49 μM^[1].</p> <p>Tubulin polymerization-IN-33 (0.15-10 μM; 72 h) shows potent growth inhibitory effects on different lymphoma lines^[1]. MCE has not independently confirmed the accuracy of these methods. They are for reference only.</p> <p>Cell Viability Assay^[1]</p> <table border="1"> <tr> <td>Cell Line:</td> <td>Marginal zone lymphoma, mantle cell lymphoma, activated B-cell like diffuse large B cell lymphoma, germinal center B-cell-like diffuse large B cell lymphoma cells</td> </tr> <tr> <td>Concentration:</td> <td>0.15-10 μM</td> </tr> <tr> <td>Incubation Time:</td> <td>72 h</td> </tr> <tr> <td>Result:</td> <td>Inhibited different lymphomas, with IC₅₀s of 1.6 μM (Marginal zone lymphoma); 1.4 μM (mantle cell lymphoma); 1.7 μM (activated B-cell like diffuse large B cell lymphoma); 1.8 μM (germinal center B-cell-like diffuse large B cell lymphoma), respectively.</td> </tr> </table>	Cell Line:	Marginal zone lymphoma, mantle cell lymphoma, activated B-cell like diffuse large B cell lymphoma, germinal center B-cell-like diffuse large B cell lymphoma cells	Concentration:	0.15-10 μM	Incubation Time:	72 h	Result:	Inhibited different lymphomas, with IC ₅₀ s of 1.6 μM (Marginal zone lymphoma); 1.4 μM (mantle cell lymphoma); 1.7 μM (activated B-cell like diffuse large B cell lymphoma); 1.8 μM (germinal center B-cell-like diffuse large B cell lymphoma), respectively.
Cell Line:	Marginal zone lymphoma, mantle cell lymphoma, activated B-cell like diffuse large B cell lymphoma, germinal center B-cell-like diffuse large B cell lymphoma cells								
Concentration:	0.15-10 μM								
Incubation Time:	72 h								
Result:	Inhibited different lymphomas, with IC ₅₀ s of 1.6 μM (Marginal zone lymphoma); 1.4 μM (mantle cell lymphoma); 1.7 μM (activated B-cell like diffuse large B cell lymphoma); 1.8 μM (germinal center B-cell-like diffuse large B cell lymphoma), respectively.								

REFERENCES

[1]. Marilia Barreca, et al. Development of [1,2]oxazoloisoindoles tubulin polymerization inhibitors: Further chemical modifications and potential therapeutic effects against lymphomas, European Journal of Medicinal Chemistry. 2022, 114744, ISSN 0223-5234.

Caution: Product has not been fully validated for medical applications. For research use only.

Tel: 609-228-6898

Fax: 609-228-5909

E-mail: tech@MedChemExpress.com

Address: 1 Deer Park Dr, Suite Q, Monmouth Junction, NJ 08852, USA