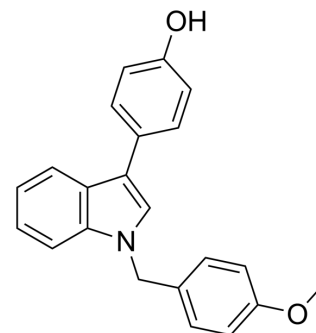


Tubulin inhibitor 31

Cat. No.:	HY-151996
Molecular Formula:	C ₂₂ H ₁₉ NO ₂
Molecular Weight:	329.39
Target:	Microtubule/Tubulin
Pathway:	Cell Cycle/DNA Damage; Cytoskeleton
Storage:	Please store the product under the recommended conditions in the Certificate of Analysis.



BIOLOGICAL ACTIVITY

Description	Tubulin inhibitor 31 is a potent tubulin inhibitor with an IC ₅₀ value of 4 μM. Tubulin inhibitor 31 shows anti-proliferative activity. Tubulin inhibitor 31 inhibits the HUVEC migration ^[1] .								
IC₅₀ & Target	IC ₅₀ : 4 μM (Tubulin) ^[1]								
In Vitro	<p>Tubulin inhibitor 31 (compound 4J) (0-100 μM; 72 h) shows anti-proliferative activity with IC₅₀s of 0.126, 0.39 μM for HUVEC, HIG-82 cells^[1].</p> <p>Tubulin inhibitor 31 (0.012, 0.063 μM; 10 h) significantly inhibits the HUVEC migration in a dose-dependent manner^[1]. MCE has not independently confirmed the accuracy of these methods. They are for reference only.</p> <p>Cell Proliferation Assay^[1]</p> <table border="1"> <tr> <td>Cell Line:</td> <td>HUVEC, HIG-82 cells</td> </tr> <tr> <td>Concentration:</td> <td>0-100 μM</td> </tr> <tr> <td>Incubation Time:</td> <td>72 h</td> </tr> <tr> <td>Result:</td> <td>Showed anti-proliferative activity with IC₅₀s of 0.126, 0.39 μM for HUVEC, HIG-82 cells.</td> </tr> </table>	Cell Line:	HUVEC, HIG-82 cells	Concentration:	0-100 μM	Incubation Time:	72 h	Result:	Showed anti-proliferative activity with IC ₅₀ s of 0.126, 0.39 μM for HUVEC, HIG-82 cells.
Cell Line:	HUVEC, HIG-82 cells								
Concentration:	0-100 μM								
Incubation Time:	72 h								
Result:	Showed anti-proliferative activity with IC ₅₀ s of 0.126, 0.39 μM for HUVEC, HIG-82 cells.								

REFERENCES

[1]. Prudhomme V, et al. Design, synthesis and biological evaluation of conformationally-restricted analogues of E7010 as inhibitors of tubulin assembly (ITA) and vascular disrupting agents (VDA). Eur J Med Chem. 2022 Dec 15;244:114809.

Caution: Product has not been fully validated for medical applications. For research use only.

Tel: 609-228-6898

Fax: 609-228-5909

E-mail: tech@MedChemExpress.com

Address: 1 Deer Park Dr, Suite Q, Monmouth Junction, NJ 08852, USA