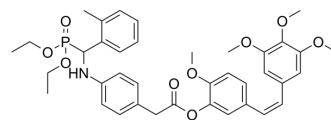


## Tubulin/MMP-IN-1

Cat. No.:	HY-146006
Molecular Formula:	C <sub>38</sub> H <sub>44</sub> NO <sub>9</sub> P
Molecular Weight:	689.73
Target:	Microtubule/Tubulin; MMP
Pathway:	Cell Cycle/DNA Damage; Cytoskeleton; Metabolic Enzyme/Protease
Storage:	Please store the product under the recommended conditions in the Certificate of Analysis.



### BIOLOGICAL ACTIVITY

#### Description

Tubulin/MMP-IN-1 (compound 15g) is a potent inhibitor of tubulin and MMP. Tubulin/MMP-IN-1 has the potential for the research of cancer diseases. Tubulin/MMP-IN-1 suppresses tubulin polymerization, induces cell cycle arrest at the G<sub>2</sub>/M phase, leads to reactive oxidative stress (ROS) generation of HepG2 cells, and results in apoptosis by the mitochondrial-dependent apoptotic pathway<sup>[1]</sup>.

### REFERENCES

[1]. Yang L, et al. Dual-functional antitumor conjugates improving the anti-metastasis effect of combretastatin A4 by targeting tubulin polymerization and matrix metalloproteinases [published online ahead of print, 2022 May 5]. *Eur J Med Chem.* 2022;238:114439.

**Caution: Product has not been fully validated for medical applications. For research use only.**

Tel: 609-228-6898

Fax: 609-228-5909

E-mail: tech@MedChemExpress.com

Address: 1 Deer Park Dr, Suite Q, Monmouth Junction, NJ 08852, USA