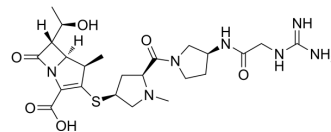


## Tomopenem

Cat. No.:	HY-123022
CAS No.:	222400-20-6
Molecular Formula:	C <sub>23</sub> H <sub>35</sub> N <sub>7</sub> O <sub>6</sub> S
Molecular Weight:	537.63
Target:	Bacterial
Pathway:	Anti-infection
Storage:	Please store the product under the recommended conditions in the Certificate of Analysis.



### BIOLOGICAL ACTIVITY

#### Description

Tomopenem (CS-023; RO4908463; R-115685) is a longer-half-life parenteral carbapenem. Tomopenem shows broad activity against 63 reference species. The activity of tomopenem against 293 clinical isolates is potent (MIC90, 0.06 to 4 µg/mL). Antianaerobic activity<sup>[1]</sup>.

### REFERENCES

[1]. Kaori Tanaka, et al. In vitro activity of tomopenem (CS-023/RO4908463) against anaerobic bacteria. Antimicrob Agents Chemother. 2009 Jan;53(1):319-22.

**Caution: Product has not been fully validated for medical applications. For research use only.**

Tel: 609-228-6898

Fax: 609-228-5909

E-mail: tech@MedChemExpress.com

Address: 1 Deer Park Dr, Suite Q, Monmouth Junction, NJ 08852, USA