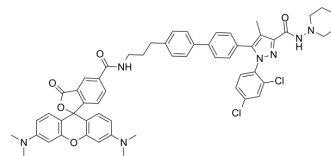


Tocrifluor 1117

Cat. No.:	HY-103336
CAS No.:	1186195-59-4
Molecular Formula:	C ₅₆ H ₅₃ Cl ₂ N ₇ O ₅
Molecular Weight:	974.97
Target:	GPR55; Cannabinoid Receptor
Pathway:	GPCR/G Protein; Neuronal Signaling
Storage:	Please store the product under the recommended conditions in the Certificate of Analysis.



BIOLOGICAL ACTIVITY

Description	Tocrifluor 1117 (T1117), a fluorescent form of the cannabinoid CB1 receptor antagonist AM251 (HY-15443), is a selective fluorescent GPR55 ligand. Tocrifluor 1117 is a potent tool for identifying the cellular location of cannabinoid receptors (including GPR55 in living tissues) (Ex/Em=543/590 nm) ^{[1][2]} .
IC ₅₀ & Target	CB1

REFERENCES

[1]. Daly CJ, et al. Fluorescent ligand binding reveals heterogeneous distribution of adrenoceptors and 'cannabinoid-like' receptors in small arteries. *Br J Pharmacol.* 2010 Feb;159(4):787-96.

[2]. Singh NS, et al. Selective GPR55 antagonism reduces chemoresistance in cancer cells. *Pharmacol Res.* 2016 Sep;111:757-766.

Caution: Product has not been fully validated for medical applications. For research use only.

Tel: 609-228-6898

Fax: 609-228-5909

E-mail: tech@MedChemExpress.com

Address: 1 Deer Park Dr, Suite Q, Monmouth Junction, NJ 08852, USA