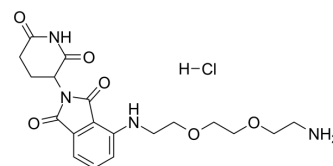


Thalidomide-PEG2-C2-NH2 hydrochloride

Cat. No.:	HY-129703B
CAS No.:	2245697-87-2
Molecular Formula:	C ₁₉ H ₂₅ ClN ₄ O ₆
Molecular Weight:	440.88
Target:	E3 Ligase Ligand-Linker Conjugates
Pathway:	PROTAC
Storage:	4°C, sealed storage, away from moisture * In solvent : -80°C, 6 months; -20°C, 1 month (sealed storage, away from moisture)



BIOLOGICAL ACTIVITY

Description	Thalidomide-PEG2-C2-NH2 hydrochloride is a synthesized E3 ligase ligand-linker conjugate that incorporates the Thalidomide based cereblon ligand and 2-unit PEG linker used in PROTAC technology ^[1] .
In Vitro	PROTACs contain two different ligands connected by a linker; one is a ligand for an E3 ubiquitin ligase and the other is for the target protein. PROTACs exploit the intracellular ubiquitin-proteasome system to selectively degrade target proteins. MCE has not independently confirmed the accuracy of these methods. They are for reference only.

REFERENCES

[1]. Wang Z, et al. Proteolysis Targeting Chimeras for the Selective Degradation of Mcl-1/Bcl-2 Derived from Nonselective Target Binding Ligands. J Med Chem. 2019 Sep 12;62(17):8152-8163.

Caution: Product has not been fully validated for medical applications. For research use only.

Tel: 609-228-6898

Fax: 609-228-5909

E-mail: tech@MedChemExpress.com

Address: 1 Deer Park Dr, Suite Q, Monmouth Junction, NJ 08852, USA