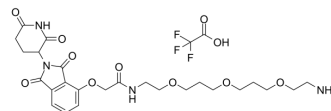


Thalidomide-O-amido-PEG1-(C1-PEG)2-C2-NH2 TFA

Cat. No.:	HY-112600A
CAS No.:	2435572-49-7
Molecular Formula:	C ₂₇ H ₃₅ F ₃ N ₄ O ₁₁
Molecular Weight:	648.58
Target:	E3 Ligase Ligand-Linker Conjugates
Pathway:	PROTAC
Storage:	4°C, stored under nitrogen * In solvent : -80°C, 6 months; -20°C, 1 month (stored under nitrogen)



BIOLOGICAL ACTIVITY

Description	Thalidomide-O-amido-PEG1-(C1-PEG)2-C2-NH2 TFA is a synthesized E3 ligase ligand-linker conjugate that incorporates the Thalidomide based cereblon ligand and 3-unit PEG linker used in PROTAC technology.
IC ₅₀ & Target	Cereblon

Caution: Product has not been fully validated for medical applications. For research use only.

Tel: 609-228-6898

Fax: 609-228-5909

E-mail: tech@MedChemExpress.com

Address: 1 Deer Park Dr, Suite Q, Monmouth Junction, NJ 08852, USA