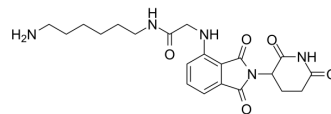


Thalidomide-NH-amido-C6-NH2

Cat. No.:	HY-138852
CAS No.:	2763827-13-8
Molecular Formula:	C ₂₁ H ₂₇ N ₅ O ₅
Molecular Weight:	429.47
Target:	E3 Ligase Ligand-Linker Conjugates
Pathway:	PROTAC
Storage:	Please store the product under the recommended conditions in the Certificate of Analysis.



BIOLOGICAL ACTIVITY

Description	Thalidomide-NH-amido-C6-NH2 is a synthesized E3 ligase ligand-linker conjugate that incorporates the Thalidomide based cereblon ligand and a linker used in PROTAC technology ^[1] .
IC ₅₀ & Target	Cereblon
In Vitro	PROTACs contain two different ligands connected by a linker; one is a ligand for an E3 ubiquitin ligase and the other is for the target protein. PROTACs exploit the intracellular ubiquitin-proteasome system to selectively degrade target proteins ^[2] . MCE has not independently confirmed the accuracy of these methods. They are for reference only.

REFERENCES

[1]. Sato T, et al. Cereblon-Based Small-Molecule Compounds to Control Neural Stem Cell Proliferation in Regenerative Medicine. *Front Cell Dev Biol.* 2021;9:629326. Published 2021 Mar 11.

[2]. Nalawansa DA, et al. PROTACs: An Emerging Therapeutic Modality in Precision Medicine. *Cell Chem Biol.* 2020;27(8):998-985.

Caution: Product has not been fully validated for medical applications. For research use only.

Tel: 609-228-6898

Fax: 609-228-5909

E-mail: tech@MedChemExpress.com

Address: 1 Deer Park Dr, Suite Q, Monmouth Junction, NJ 08852, USA