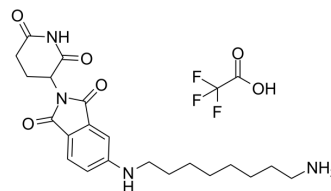


Thalidomide-5-NH2-C8-NH2 TFA

Cat. No.:	HY-148872
CAS No.:	2097509-49-2
Molecular Formula:	C ₂₃ H ₂₉ F ₃ N ₄ O ₆
Molecular Weight:	514.49
Target:	Biochemical Assay Reagents
Pathway:	Others
Storage:	-20°C, sealed storage, away from moisture and light * In solvent : -80°C, 6 months; -20°C, 1 month (sealed storage, away from moisture and light)



SOLVENT & SOLUBILITY

In Vitro	DMSO : 100 mg/mL (194.37 mM; Need ultrasonic)																					
	<table border="1"> <thead> <tr> <th rowspan="2">Solvent</th> <th rowspan="2">Mass</th> <th colspan="3">Concentration</th> </tr> <tr> <th>1 mg</th> <th>5 mg</th> <th>10 mg</th> </tr> </thead> <tbody> <tr> <td rowspan="3">Preparing Stock Solutions</td> <td>1 mM</td> <td>1.9437 mL</td> <td>9.7184 mL</td> <td>19.4367 mL</td> </tr> <tr> <td>5 mM</td> <td>0.3887 mL</td> <td>1.9437 mL</td> <td>3.8873 mL</td> </tr> <tr> <td>10 mM</td> <td>0.1944 mL</td> <td>0.9718 mL</td> <td>1.9437 mL</td> </tr> </tbody> </table>	Solvent	Mass	Concentration			1 mg	5 mg	10 mg	Preparing Stock Solutions	1 mM	1.9437 mL	9.7184 mL	19.4367 mL	5 mM	0.3887 mL	1.9437 mL	3.8873 mL	10 mM	0.1944 mL	0.9718 mL	1.9437 mL
Solvent	Mass			Concentration																		
		1 mg	5 mg	10 mg																		
Preparing Stock Solutions	1 mM	1.9437 mL	9.7184 mL	19.4367 mL																		
	5 mM	0.3887 mL	1.9437 mL	3.8873 mL																		
	10 mM	0.1944 mL	0.9718 mL	1.9437 mL																		
	Please refer to the solubility information to select the appropriate solvent.																					
In Vivo	<ol style="list-style-type: none"> Add each solvent one by one: 10% DMSO >> 40% PEG300 >> 5% Tween-80 >> 45% saline Solubility: ≥ 2.5 mg/mL (4.86 mM); Clear solution Add each solvent one by one: 10% DMSO >> 90% (20% SBE-β-CD in saline) Solubility: ≥ 2.5 mg/mL (4.86 mM); Clear solution 																					

BIOLOGICAL ACTIVITY

Description	Thalidomide-5-NH2-C8-NH2 TFA can be used for compound synthesis ^[1] .
--------------------	--

REFERENCES

[1]. Michael Bruno Plewe, et al. Compounds and methods of treating diseases. Patent WO2022068933A1.

Caution: Product has not been fully validated for medical applications. For research use only.

Tel: 609-228-6898

Fax: 609-228-5909

E-mail: tech@MedChemExpress.com

Address: 1 Deer Park Dr, Suite Q, Monmouth Junction, NJ 08852, USA