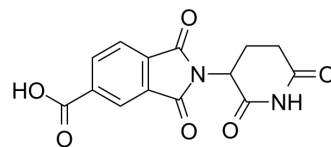


## Thalidomide-5-COOH

Cat. No.:	HY-139539		
CAS No.:	1216805-11-6		
Molecular Formula:	C <sub>14</sub> H <sub>10</sub> N <sub>2</sub> O <sub>6</sub>		
Molecular Weight:	302.24		
Target:	Ligands for E3 Ligase		
Pathway:	PROTAC		
Storage:	Powder	-20°C	3 years
		4°C	2 years
	In solvent	-80°C	6 months
		-20°C	1 month



### SOLVENT & SOLUBILITY

#### In Vitro

DMSO : 125 mg/mL (413.58 mM; Need ultrasonic)

Concentration	Solvent	Mass		
		1 mg	5 mg	10 mg
Preparing Stock Solutions	1 mM	3.3086 mL	16.5431 mL	33.0863 mL
	5 mM	0.6617 mL	3.3086 mL	6.6173 mL
	10 mM	0.3309 mL	1.6543 mL	3.3086 mL

Please refer to the solubility information to select the appropriate solvent.

### BIOLOGICAL ACTIVITY

#### Description

Thalidomide-5-COOH is the Thalidomide-based cereblon ligand used in the recruitment of CRBN protein. Thalidomide-5-COOH can be connected to the ligand for protein by a linker to form PROTACs<sup>[1]</sup>.

#### In Vitro

PROTACs contain two different ligands connected by a linker; one is a ligand for an E3 ubiquitin ligase and the other is for the target protein. PROTACs exploit the intracellular ubiquitin-proteasome system to selectively degrade target proteins<sup>[2]</sup>. MCE has not independently confirmed the accuracy of these methods. They are for reference only.

### REFERENCES

[1]. Liu K, et, al. Design and biological characterization of hybrid compounds of curcumin and thalidomide for multiple myeloma. *Org Biomol Chem*. 2013 Aug 7;11(29):4757-63.

---

**Caution: Product has not been fully validated for medical applications. For research use only.**

Tel: 609-228-6898

Fax: 609-228-5909

E-mail: [tech@MedChemExpress.com](mailto:tech@MedChemExpress.com)

Address: 1 Deer Park Dr, Suite Q, Monmouth Junction, NJ 08852, USA