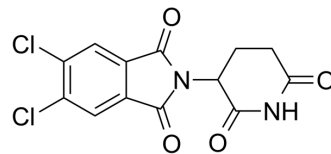


Thalidomide-5,6-Cl

Cat. No.:	HY-139547
CAS No.:	2648939-40-4
Molecular Formula:	C ₁₃ H ₈ Cl ₂ N ₂ O ₄
Molecular Weight:	327.12
Target:	Ligands for E3 Ligase
Pathway:	PROTAC
Storage:	Please store the product under the recommended conditions in the Certificate of Analysis.



BIOLOGICAL ACTIVITY

Description	Thalidomide-5,6-Cl is the Thalidomide-based cereblon ligand used in the recruitment of CRBN protein. Thalidomide-5,6-Cl can be connected to the ligand for protein by a linker to form PROTACs.
In Vitro	Thalidomide-5,6-Cl is the Thalidomide-based cereblon ligand used in the recruitment of CRBN protein. Thalidomide-5,6-Cl can be connected to the ligand for protein by a linker to form PROTACs. MCE has not independently confirmed the accuracy of these methods. They are for reference only.

REFERENCES

[1]. Zhang NN, et, al. A Thermostable mRNA Vaccine against COVID-19. Cell. 2020 Sep 3;182(5):1271-1283.e16.

Caution: Product has not been fully validated for medical applications. For research use only.

Tel: 609-228-6898

Fax: 609-228-5909

E-mail: tech@MedChemExpress.com

Address: 1 Deer Park Dr, Suite Q, Monmouth Junction, NJ 08852, USA