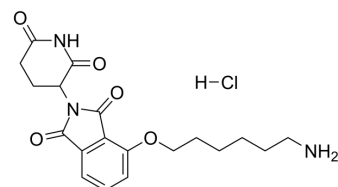


Thalidomide-4-O-C6-NH2 hydrochloride

Cat. No.:	HY-135250B
CAS No.:	2245697-88-3
Molecular Formula:	C ₁₉ H ₂₄ ClN ₃ O ₅
Molecular Weight:	409.86
Target:	E3 Ligase Ligand-Linker Conjugates
Pathway:	PROTAC
Storage:	4°C, sealed storage, away from moisture and light * In solvent : -80°C, 6 months; -20°C, 1 month (sealed storage, away from moisture and light)



SOLVENT & SOLUBILITY

In Vitro

DMSO : 83.33 mg/mL (203.31 mM; Need ultrasonic)
H₂O : 25 mg/mL (61.00 mM; Need ultrasonic)

Preparing Stock Solutions	Solvent Concentration	Mass		
		1 mg	5 mg	10 mg
	1 mM	2.4399 mL	12.1993 mL	24.3986 mL
	5 mM	0.4880 mL	2.4399 mL	4.8797 mL
	10 mM	0.2440 mL	1.2199 mL	2.4399 mL

Please refer to the solubility information to select the appropriate solvent.

In Vivo

- Add each solvent one by one: PBS
Solubility: 8.33 mg/mL (20.32 mM); Clear solution; Need ultrasonic
- Add each solvent one by one: 10% DMSO >> 40% PEG300 >> 5% Tween-80 >> 45% saline
Solubility: ≥ 2.08 mg/mL (5.07 mM); Clear solution
- Add each solvent one by one: 10% DMSO >> 90% (20% SBE-β-CD in saline)
Solubility: ≥ 2.08 mg/mL (5.07 mM); Clear solution

BIOLOGICAL ACTIVITY

Description

Thalidomide-4-O-C6-NH2 hydrochloride is a synthesized E3 ligase ligand-linker conjugate used in the PROTAC dTAG-13, a degrader of FKBP12^{F36V} and BET^[1].

IC₅₀ & Target

Cereblon

REFERENCES

Caution: Product has not been fully validated for medical applications. For research use only.

Tel: 609-228-6898

Fax: 609-228-5909

E-mail: tech@MedChemExpress.com

Address: 1 Deer Park Dr, Suite Q, Monmouth Junction, NJ 08852, USA