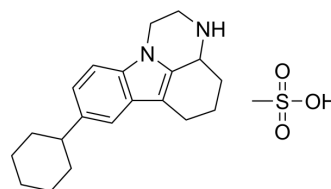


Tetrindole mesylate

Cat. No.:	HY-101169
CAS No.:	170964-68-8
Molecular Formula:	C ₂₁ H ₃₀ N ₂ O ₃ S
Molecular Weight:	390.54
Target:	Monoamine Oxidase
Pathway:	Neuronal Signaling
Storage:	Please store the product under the recommended conditions in the Certificate of Analysis.



BIOLOGICAL ACTIVITY

Description	Tetrindole mesylate is a selective inhibitor of monoamine oxidase A (MAO A). Tetrindole mesylate inhibits rat brain mitochondrial MAO A in a competitive manner with a K _i value of 0.4 μM and inhibits MAO B with a K _i of 110 μM. Tetrindole mesylate has antidepressant activity ^{[1][2]} .
IC₅₀ & Target	MAO-A
In Vitro	Tetrindole mesylate has IC ₅₀ s of 0.51-1.37 μM for 6 human breast tumor cell lines (MCF-7, HCC1954, T47D, MDA-MB-157, ZR75-1, BT474) ^[2] . MCE has not independently confirmed the accuracy of these methods. They are for reference only.
In Vivo	Tetrindole mesylate (25 mg/kg; po; single dose) inhibits rat brain and liver mitochondrial MAO A by 80% within 0.5-1 hr and the onset of recovery of enzyme activity became evident after 24 hr in male albino rats weighing 180-200 g ^[1] . MCE has not independently confirmed the accuracy of these methods. They are for reference only.

REFERENCES

[1]. A E Medvedev, et al. Monoamine oxidase inhibition by novel antidepressant tetrindole. *Biochem Pharmacol.* 1994 Jan 20;47(2):303-8.

[2]. William D Gwynne, et al. Monoamine oxidase-A activity is required for clonal tumorsphere formation by human breast tumor cells. *Cell Mol Biol Lett.* 2019 Nov 12;24:59.

Caution: Product has not been fully validated for medical applications. For research use only.

Tel: 609-228-6898

Fax: 609-228-5909

E-mail: tech@MedChemExpress.com

Address: 1 Deer Park Dr, Suite Q, Monmouth Junction, NJ 08852, USA