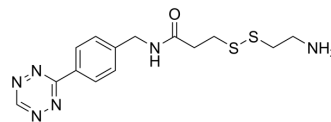


Tetrazine-Ph-SS-amine

Cat. No.:	HY-133504
Molecular Formula:	C ₁₄ H ₁₈ N ₆ OS ₂
Molecular Weight:	350.46
Target:	ADC Linker
Pathway:	Antibody-drug Conjugate/ADC Related
Storage:	Please store the product under the recommended conditions in the Certificate of Analysis.



BIOLOGICAL ACTIVITY

Description	Tetrazine-Ph-SS-amine is a cleavable ADC linker used in the synthesis of antibody-drug conjugates (ADCs) ^[1] . Tetrazine-Ph-SS-amine is a click chemistry reagent, it contains a Tetrazine group that can undergo an inverse electron demand Diels-Alder reaction (IEDDA) with molecules containing TCO groups.	
IC₅₀ & Target	Disulfide Cleavable Linker	Cleavable Linker
In Vitro	ADCs are comprised of an antibody to which is attached an ADC cytotoxin through an ADC linker ^[1] . MCE has not independently confirmed the accuracy of these methods. They are for reference only.	

REFERENCES

[1]. Beck A, et al. Strategies and challenges for the next generation of antibody-drug conjugates. Nat Rev Drug Discov. 2017 May;16(5):315-337.

Caution: Product has not been fully validated for medical applications. For research use only.

Tel: 609-228-6898

Fax: 609-228-5909

E-mail: tech@MedChemExpress.com

Address: 1 Deer Park Dr, Suite Q, Monmouth Junction, NJ 08852, USA